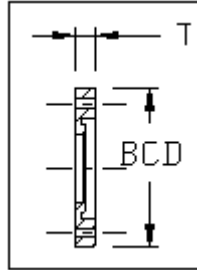


HDPE
Back-Up Ring, IPS
Ductile Iron / Epoxy & Polypropylene Encapsulated / 316 Stainless Steel
ANSI B16.5, B16.47, B16.1 and AWWA C207



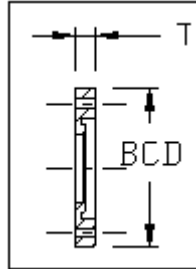
Dimensions and weights are approximate and subject to change. Please call for sizes not listed.

IPS Pipe Size	Nominal OD (in)	Dimension Ratio (DR)	Dimension (in)		Weight (lbs)	Bolt	
			BCD	T		Diameter	Number
1"	1.315	7	3 1/8	9/16	1	1/2	4
1 1/4"	1.660	7	3 1/2	5/8	2	1/2	4
1 1/2"	1.900	7	3	11/16	2	1/2	4
2"	2.375	11	4 3/4	1/2	1.5	5/8	4
		7		3/4	3		
3"	3.500	11	6	1/2	2.5	5/8	4
		7		1	4		
4"	4.500	11	7 1/2	3/16	4	5/8	8
		7		1	6		
6"	6.625	11	9 1/2	5/8	5	3/4	8
		7		1	7		
8"	8.625	11	11 3/4	7/8	8	3/4	8
		7		1 1/8	11		
10"	10.750	11	14 1/4	1	12	7/8	12
		7	14 1/4	1 3/16	16	7/8	12
12"	12.750	11	17	1 1/4	20	7/8	12
		7	17	1 1/2	23	7/8	12
14"	14.000	11	18 3/4	1 3/8	30	1	12
		7	18 3/4	1 5/8	37	1	12
16"	16.000	11	21 1/4	1 11/16	40	1	16
		7	21 1/4	1 7/8	49	1	16
18"	18.000	11	22 3/4	1 11/16	45	1 1/8	16
		7	22 3/4	1 13/16	48	1 1/8	16

Revised 02/23/2017

San Francisco	511 Tunnel Avenue, Brisbane, CA 94005	415-467-4630	FAX 415-467-1010
Los Angeles	1304 E. San Bernardino Ave., San Bernardino, CA 92408	909-799-7800	FAX 909-799-5558
Bakersfield	4039-C Well Tech Way, Bakersfield, CA 93308	661-589-7300	FAX 661-589-7377
Reno	675-B Edison Way, Reno, NV 89502	775-856-1888	FAX 775-856-1844

HDPE
Back-Up Ring, IPS
Ductile Iron / Epoxy & Polypropylene Encapsulated / 316 Stainless Steel
ANSI B16.5, B16.47, B16.1 and AWWA C207



Dimensions and weights are approximate and subject to change. Please call for sizes not listed.

IPS Pipe Size	Nominal OD (in)	Dimension Ratio (DR)	Dimension (in)		Weight (lbs)	Bolt	
			BCD	T		Diameter	Number
20"	20.000	11	25	1 ¹³ / ₁₆	55	1 ¹ / ₈	20
		7	25	2 ¹ / ₁₆	61	1 ¹ / ₈	20
22"	22.000	11	27 ¹ / ₄	2	65	1 ¹ / ₄	20
		7	27 ¹ / ₄	2 ¹ / ₈	72	1 ¹ / ₄	20
24"	24.000	11	29 ¹ / ₂	2 ¹ / ₈	80	1 ¹ / ₄	20
		7	29 ¹ / ₂	2 ¹ / ₄	91	1 ¹ / ₄	20
26"	26.000	11	31 ³ / ₄	2 ³ / ₈	82	1 ¹ / ₄	24
		7	31 ³ / ₄	2 ³ / ₈	104	1 ¹ / ₄	24
28"	28.000	11	34	2 ¹ / ₂	92	1 ¹ / ₄	28
		9	34	2 ⁵ / ₈	116	1 ¹ / ₄	28
30"	30.000	11	36	2 ¹ / ₈	104	1 ¹ / ₄	28
		9	36	2 ¹ / ₂	143	1 ¹ / ₄	28
32"	32.000	11	38 ¹ / ₂	2 ¹ / ₈	111	1 ¹ / ₂	28
		9	38 ¹ / ₂	2 ⁵ / ₈	168	1 ¹ / ₂	28
34"	34.000	11	40 ¹ / ₂	2 ³ / ₄	181	1 ¹ / ₂	32
		9	40 ¹ / ₂	3	191	1 ¹ / ₂	32
36"	36.000	11	42 ³ / ₄	2 ¹ / ₈	129	1 ¹ / ₂	32
		9	42 ³ / ₄	2 ³ / ₄	196	1 ¹ / ₂	32
40"	40.000	11	47 ¹ / ₄	3 ¹ / ₂	265	1 ¹ / ₂	36
		21	49 ¹ / ₂	3	277	1 ¹ / ₂	36
42"	42.000	11	49 ¹ / ₂	3 ³ / ₈	319	1 ¹ / ₂	36
		26	56	3 ¹ / ₂	332	1 ¹ / ₂	44
48"	48.000	11	56	3 ⁷ / ₈	400	1 ¹ / ₂	44
		26	62 ³ / ₄	3 ³ / ₄	464	1 ³ / ₄	44
54"	54.000	17	62 ³ / ₄	4 ¹ / ₈	516	1 ³ / ₄	44

Revised 02/23/2017

San Francisco	511 Tunnel Avenue, Brisbane, CA 94005	415-467-4630	FAX 415-467-1010
Los Angeles	1304 E. San Bernardino Ave., San Bernardino, CA 92408	909-799-7800	FAX 909-799-5558
Bakersfield	4039-C Well Tech Way, Bakersfield, CA 93308	661-589-7300	FAX 661-589-7377
Reno	675-B Edison Way, Reno, NV 89502	775-856-1888	FAX 775-856-1844