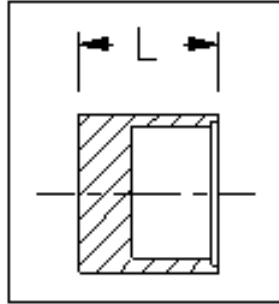


HDPE PE4710
End Cap, IPS Machined
AWWA C906



Dimensions and weights are approximate and subject to change. Please call for sizes not listed.

IPS Pipe Size	Nominal OD (in)	Dimension Ratio (DR)	Dimension (in)	Weight (lbs)
			L	
10"	10.750	17	3	8
		11		
12"	12.750	17	3	12
		11		
14"	14.000	17	3	15
		11		
16"	16.000	17	3	20
		11		
18"	18.000	17	3	25
		11		
20"	20.000	17	5	50
		11		
22"	22.000	17	5	75
		11		
24"	24.000	17	5	100
		11		

Revised 02/23/2017

<i>San Francisco</i>	<i>511 Tunnel Avenue, Brisbane, CA 94005</i>	<i>415-467-4630</i>	<i>FAX 415-467-1010</i>
<i>Los Angeles</i>	<i>1304 E. San Bernardino Ave., San Bernardino, CA 92408</i>	<i>909-799-7800</i>	<i>FAX 909-799-5558</i>
<i>Bakersfield</i>	<i>4039-C Well Tech Way, Bakersfield, CA 93308</i>	<i>661-589-7300</i>	<i>FAX 661-589-7377</i>
<i>Reno</i>	<i>675-B Edison Way, Reno, NV 89502</i>	<i>775-856-1888</i>	<i>FAX 775-856-1844</i>