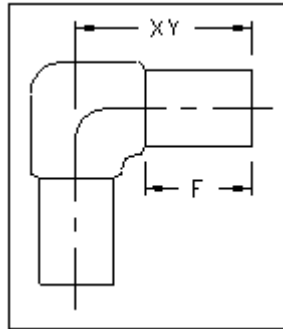


HDPE PE4710
Elbow, 90° IPS Molded
AWWA C901 or C906



Dimensions and weights are approximate and subject to change. Please call for sizes not listed.

IPS Pipe Size	Nominal OD (in)	Dimension Ratio (DR)	Dimension (in)		Weight (lbs)
			F	XY	
3/4"	1.050	11	1½	3	0.1
1"	1.315	11	1½	3	0.1
1¼"	1.660	11	2½	4	0.2
1½"	1.900	11	3	4½	0.2
2"	2.375	11	3	5	0.5
3"	3.500	17	3	5⅝	1
		11			
4"	4.500	17	3	6	2.5
		11			
6"	6.625	17	4	8¼	6
		11			
8"	8.625	17	6	11¾	12
		11			
10"	10.750	17	6	13¾	22
		11			
12"	12.750	17	7½	15¾	35
		11			

Revised 02/13/2017

<i>San Francisco</i>	<i>511 Tunnel Avenue, Brisbane, CA 94005</i>	<i>415-467-4630</i>	<i>FAX 415-467-1010</i>
<i>Los Angeles</i>	<i>1304 E. San Bernardino Ave., San Bernardino, CA 92408</i>	<i>909-799-7800</i>	<i>FAX 909-799-5558</i>
<i>Bakersfield</i>	<i>4039-C Well Tech Way, Bakersfield, CA 93308</i>	<i>661-589-7300</i>	<i>FAX 661-589-7377</i>
<i>Reno</i>	<i>675-B Edison Way, Reno, NV 89502</i>	<i>775-856-1888</i>	<i>FAX 775-856-1844</i>