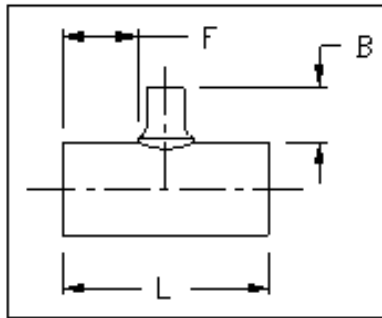


HDPE PE4710
Tee, IPS Saddle Reducing, 8" Branch
AWWA C906



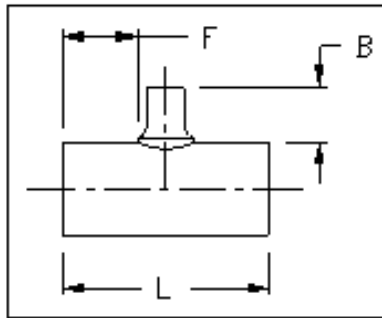
Dimensions and weights are approximate and subject to change. Please call for sizes not listed.

IPS Pipe Size		Dimension Ratio (DR)	Dimension (in)			Weight (lbs)
Main	Branch		L	F	B	
14"	8"	17	26	8	20	42
		11				63
16"	8"	17	26	8	20	52
		11				78
18"	8"	17	26	8	20	63
		11				95
20"	8"	17	26	8	20	75
		11				113
22"	8"	17	26	8	20	90
		11				135
24"	8"	17	26	8	20	104
		11				156

Revised 02/23/2017

San Francisco	511 Tunnel Avenue, Brisbane, CA 94005	415-467-4630	FAX 415-467-1010
Los Angeles	1304 E. San Bernardino Ave., San Bernardino, CA 92408	909-799-7800	FAX 909-799-5558
Bakersfield	4039-C Well Tech Way, Bakersfield, CA 93308	661-589-7300	FAX 661-589-7377
Reno	675-B Edison Way, Reno, NV 89502	775-856-1888	FAX 775-856-1844

HDPE PE4710
Tee, IPS Saddle Reducing, 8" Branch
AWWA C906



Dimensions and weights are approximate and subject to change. Please call for sizes not listed.

IPS Pipe Size		Dimension Ratio (DR)	Dimension (in)			Weight (lbs)
Main	Branch		L	F	B	
28"	8"	17	53	21	20	275
		11				412
30"	8"	17	53	21	20	312
		11				468
32"	8"	17	53	21	20	353
		11				530
36"	8"	17	53	21	20	445
		11				668
42"	8"	17	53	21	20	486
		11				600
48"	8"	17	53	21	20	635
		11				784
54"	8"	17	53	21	20	800
		11				990

Revised 02/23/2017

San Francisco	511 Tunnel Avenue, Brisbane, CA 94005	415-467-4630	FAX 415-467-1010
Los Angeles	1304 E. San Bernardino Ave., San Bernardino, CA 92408	909-799-7800	FAX 909-799-5558
Bakersfield	4039-C Well Tech Way, Bakersfield, CA 93308	661-589-7300	FAX 661-589-7377
Reno	675-B Edison Way, Reno, NV 89502	775-856-1888	FAX 775-856-1844