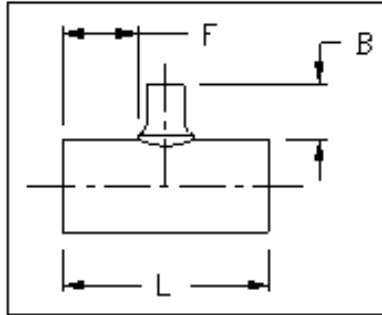


HDPE PE4710  
Tee, IPS Saddle Reducing, 10" Branch  
AWWA C906



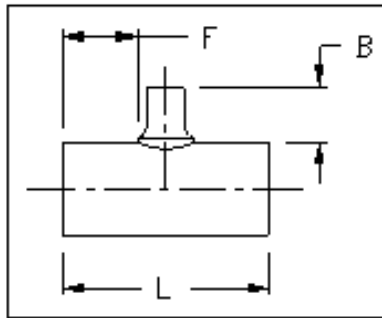
Dimensions and weights are approximate and subject to change. Please call for sizes not listed.

IPS Pipe Size		Dimension Ratio (DR)	Dimension (in)			Weight (lbs)
Main	Branch		L	F	B	
16"	10"	17	30	8	20	63
		11				95
18"	10"	17	30	8	20	76
		11				114
20"	10"	17	30	8	20	91
		11				137
22"	10"	17	30	8	20	106
		11				160
24"	10"	17	30	8	20	124
		11				186

Revised 02/23/2017

<i>San Francisco</i>	<i>511 Tunnel Avenue, Brisbane, CA 94005</i>	<i>415-467-4630</i>	<i>FAX 415-467-1010</i>
<i>Los Angeles</i>	<i>1304 E. San Bernardino Ave., San Bernardino, CA 92408</i>	<i>909-799-7800</i>	<i>FAX 909-799-5558</i>
<i>Bakersfield</i>	<i>4039-C Well Tech Way, Bakersfield, CA 93308</i>	<i>661-589-7300</i>	<i>FAX 661-589-7377</i>
<i>Reno</i>	<i>675-B Edison Way, Reno, NV 89502</i>	<i>775-856-1888</i>	<i>FAX 775-856-1844</i>

HDPE PE4710  
Tee, IPS Saddle Reducing, 10" Branch  
AWWA C906



Dimensions and weights are approximate and subject to change. Please call for sizes not listed.

IPS Pipe Size		Dimension Ratio (DR)	Dimension (in)			Weight (lbs)
Main	Branch		L	F	B	
28"	10"	17	56	21	20	292
		11				438
30"	10"	17	56	21	20	334
		11				500
32"	10"	17	56	21	20	378
		11				567
36"	10"	17	56	21	20	474
		11				710
42"	10"	17	56	21	20	518
		11				640
48"	10"	26	56	21	20	674
		17				832
54"	10"	26	56	21	20	850
		17				1,050

Revised 02/23/2017

San Francisco	511 Tunnel Avenue, Brisbane, CA 94005	415-467-4630	FAX 415-467-1010
Los Angeles	1304 E. San Bernardino Ave., San Bernardino, CA 92408	909-799-7800	FAX 909-799-5558
Bakersfield	4039-C Well Tech Way, Bakersfield, CA 93308	661-589-7300	FAX 661-589-7377
Reno	675-B Edison Way, Reno, NV 89502	775-856-1888	FAX 775-856-1844