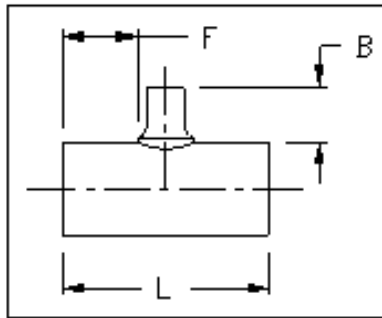


HDPE PE4710
Tee, IPS Saddle Reducing, 16" & 18" Branch
AWWA C906



Dimensions and weights are approximate and subject to change. Please call for sizes not listed.

IPS Pipe Size		Dimension Ratio (DR)	Dimension (in)			Weight (lbs)
Main	Branch		L	F	B	
30"	16"	17	46	13	39	326
		11				490
32"	16"	17	46	13	39	362
		11				545
36"	16"	17	46	13	39	358
		11				442
42"	18"	17	62	20	39	774
		11				1,160
48"	18"	26	62	20	39	986
		17				1,480
54"	18"	26	62	20	39	995
		17				1,228

Revised 02/23/2017

<i>San Francisco</i>	<i>511 Tunnel Avenue, Brisbane, CA 94005</i>	<i>415-467-4630</i>	<i>FAX 415-467-1010</i>
<i>Los Angeles</i>	<i>1304 E. San Bernardino Ave., San Bernardino, CA 92408</i>	<i>909-799-7800</i>	<i>FAX 909-799-5558</i>
<i>Bakersfield</i>	<i>4039-C Well Tech Way, Bakersfield, CA 93308</i>	<i>661-589-7300</i>	<i>FAX 661-589-7377</i>
<i>Reno</i>	<i>675-B Edison Way, Reno, NV 89502</i>	<i>775-856-1888</i>	<i>FAX 775-856-1844</i>