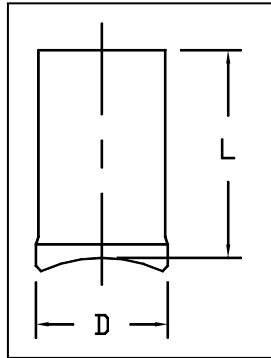


HDPE
Branch Saddle, IPS Molded
AWWA C901 or C906



Dimensions and weights are approximate and subject to change. Please call for sizes not listed.

Main IPS Pipe Size	Outlet		Pressure Class	Dimension (in)		Weight (Lbs)
	IPS Pipe Size	Nominal OD (in)		L	B	
4" - 48"	3/4"	1.050*	160	3	1 1/2	0.2
			200			
	1"	1.315*	160	3	1 3/4	
			200			
6" - 48"	1 1/4"	1.660*	160	3 1/4	1 3/4	0.3
	1 1/2"	1.900*	160	3 1/2	2 1/8	
	2"	2.375*	160	3 1/4	2 1/2	
			200	3 5/8	2 1/2	
8" - 48"	3"	4.500*	100	4	5	1
			160			
			200			
8" - 48"	4"	4.500*	100	4	5	2
			160			
			200			
12" - 48"	6"	1.660*	100	6	7	3
			160			

* Meets AWWA

Requires Special Heaters & Equipment to Install.
Always check availability of equipment for rental or purchase before ordering.

<i>San Francisco</i>	<i>511 Tunnel Avenue, Brisbane, CA 94005</i>	<i>415-467-4630</i>	<i>FAX 415-467-1010</i>
<i>Los Angeles</i>	<i>1304 E. San Bernardino Ave., San Bernardino, CA 92408</i>	<i>909-799-7800</i>	<i>FAX 909-799-5558</i>
<i>Bakersfield</i>	<i>5221 Gilmore Ave., Bakersfield, CA 93308</i>	<i>661-326-7800</i>	<i>FAX 661-326-7805</i>
<i>Reno</i>	<i>675-B Edison Way, Reno, NV 89502</i>	<i>775-856-1888</i>	<i>FAX 775-856-1844</i>